

# The Pelican Island Bridge in Galveston Harbor



This is the information for normal operations.

# Pelican Island Bridge (Galveston Harbor)

phone: 409-744-2908    VHF channel 16

**Due to rush hour traffic on the bridge, there are no openings during the following weekday hours:**

**6:45am – 8:10am**

**12:00noon – 1:00pm**

**4:15pm – 5:15pm**

**(There are no opening restrictions on weekends and holidays.)**

## However, during 2014 the bridge is closed for major repairs.

### TX - GIWW - GALVESTON CHANNEL - Construction and Temporary Final Rule – UPDATE (Feb. 2014)

Construction has begun and is ongoing on the Pelican Island Causeway Bridge across the Galveston Channel, Mile 4.5, GIWW at Mile 356.1, WHL, at Galveston, Texas. The purpose of the closure is to conduct major repairs on the mechanical portions of the bridge to improve operation and safety.

The Commander, Eighth Coast Guard District has issued a temporary final rule deviation from the regulation in 33 CFR 117.966 governing the operation of the Pelican Island Causeway Bascule Span Bridge across the Galveston Channel, Mile 4.5, GIWW at Mile 356.1, WHL, at Galveston, Texas. This temporary final rule 33 CFR 117.T966 allows the bridge to remain closed to navigation continuously from May 6, 2013 through July 8, 2014, a period of 14-months. HOWEVER, due to delays, the construction did not begin until on or about October 1, 2013. The contractor has estimates that the work will be complete 14-months later. The temporary final rule will be extended as necessary to accommodate the new termination date of the scheduled work.

**The current expected completion date is December 31, 2014.** For up-to-date information, regarding changes in the work will be published in the Local Notice to Mariners when it becomes available.

The bridge will be inoperable even for emergencies, including hurricanes. If the work planned is completed prior to the scheduled end date, the bridge will be returned to service and the temporary final rule cancelled.

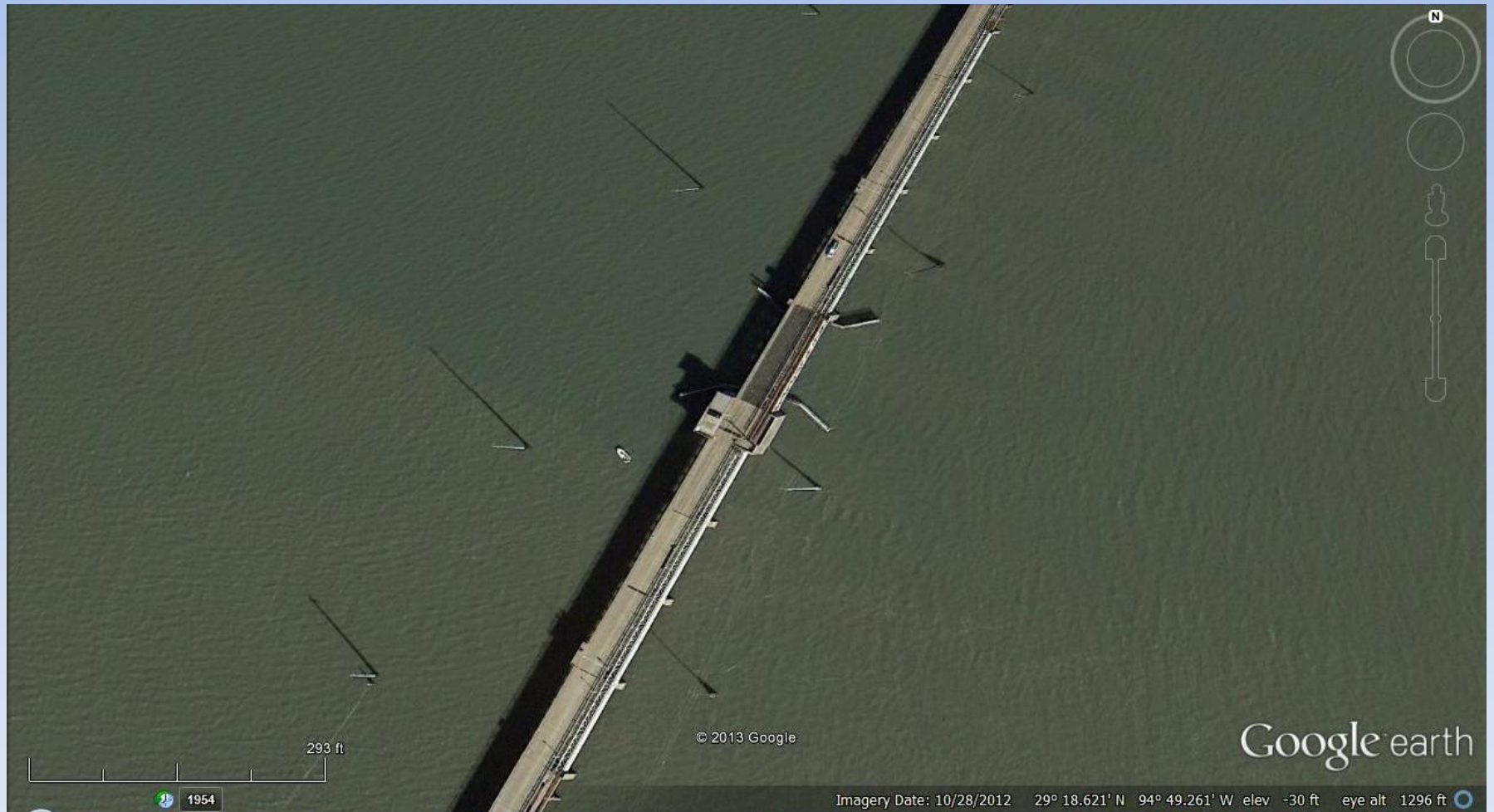
**Mariners with vertical clearance requirements of less than 13 feet above mean high water may transit beneath the closed structure; however, all other vessels will be required to transit through the GIWW around the island.**

Alternate routes are available.



[illegible]

# Aerial view of the bridge





# During the construction there is “**Do Not Enter!**” **Safety Zone** at the center span of the bridge!

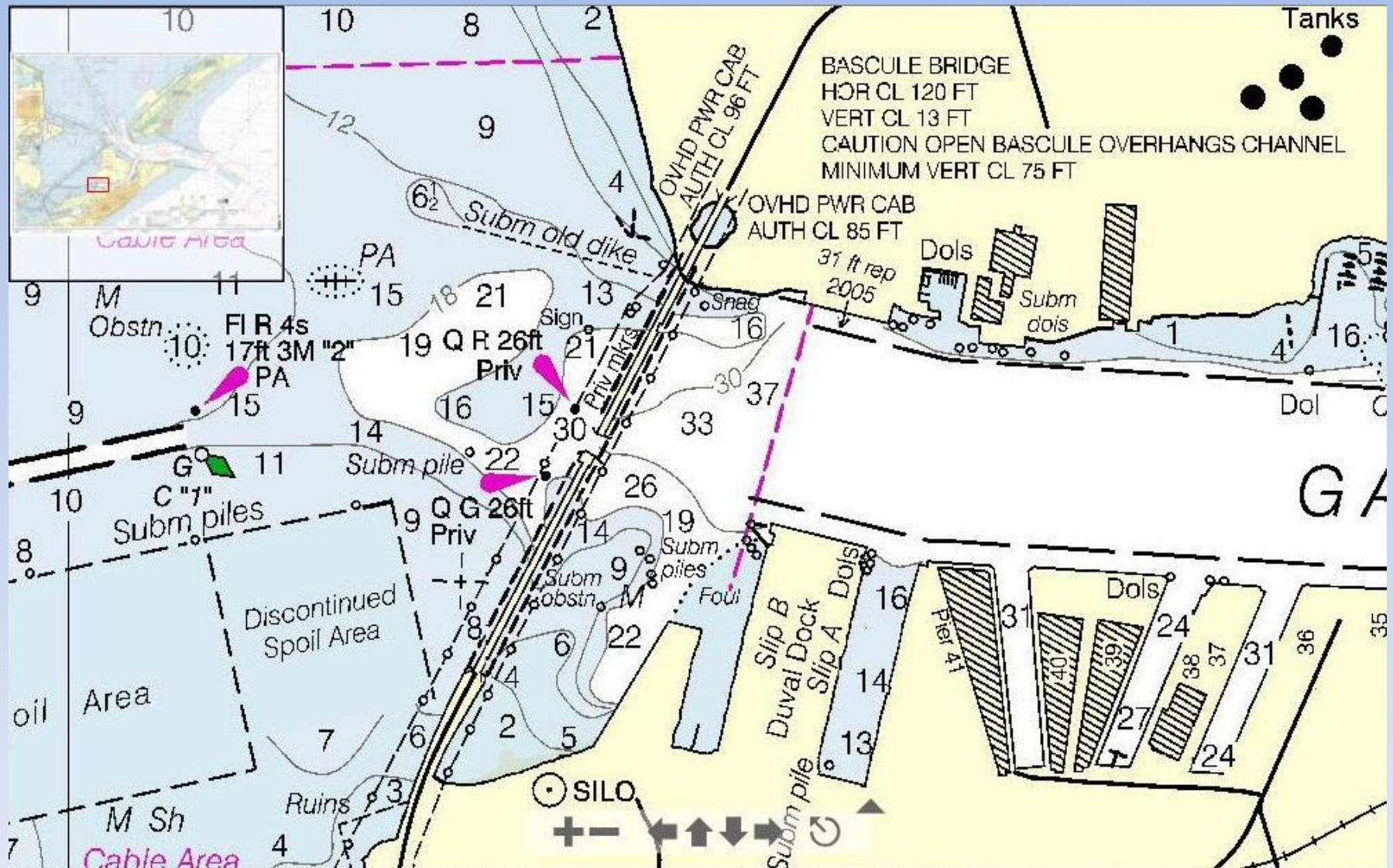
Mariners with vertical clearance requirements of less than 13 feet above mean high water may, with caution, transit beneath the fixed portion of the structure on either side of the bascule bridge.



The bridge tender at the Pelican Island Bridge answers on VHF ch 16 and can also be reached at 409-744-2908.



**Water depths under the fixed spans are sufficient for safe transit.**





# View from bridge looking north.





# View from bridge looking south.

